

PLATINUM v.2 Series (2013)



Available Finishes



WALNUT



BLACK



WENGE

New Level of Mastery!

There were no compromises made during the design and manufacture process of the previous Platinum series, but in the newest v.2 version our engineers and designers show a whole new level of mastership.

Completely new TPTTD Pure Titanium Dome tweeter has been tuned to reach remarkable 40KHz top frequency and the new TWG TAGA Waveguide design allows to widen the dispersion of highs around the room. TTP Top Plate (selected models only) with highly placed tweeter reduces standing waves effect and creates three-dimensional performance. The result is a spacious, crystal clear and rich sound performance even at highest volumes.

TPACD Pure Aluminum Cone midrange and bass drivers have been tuned and upgraded. Now mids are more natural, live and rich, and bass is much better defined and deeper.

There are now three floorstanding models to fit variously sized rooms and meet different audiophiles' demands. Now floorstanding models are placed on solid bases with spikes, which ensure stability as well as isolate the speaker from the floor.

There are three different options for center speaker and two surround speakers.

Totally new bookshelf speaker has been introduced, as an excellent choice for smaller rooms or for sound monitor applications.

**Now the design details turn the Platinum v.2 series into very fashionable and luxury speakers!
They will both look and sound great at your home!**

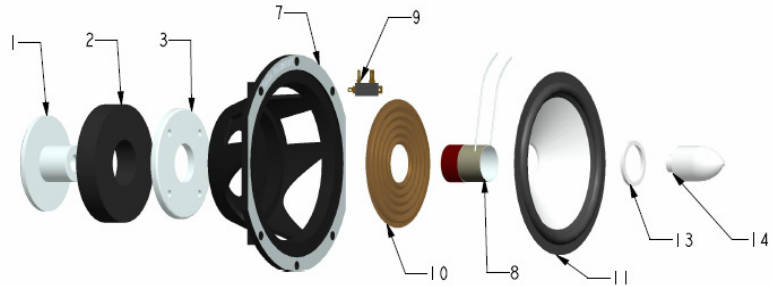
Specifications	F-100	F-80	F-60	B-40	C-100	C-40PR	S-100	S-40
Design	Floorstanding 3-way, 4 drivers, Bi-wiring, 15mm MDF TLIE enclosure Crossover points 700Hz, 4kHz	Floorstanding 2-way, 3 drivers, Bi-wiring 15mm MDF TLIE enclosure Crossover points 2 kHz	Floorstanding 3-way, 3 drivers, Bi-wiring 15mm MDF TLIE enclosure Crossover points 700Hz, 4kHz	Bookshelf 2-way, 2 drivers, Bi-wiring 15mm MDF TLIE enclosure Crossover points 2.5kHz	Center 2-way, 5 głośników, Wall mounts 12mm MDF TLIE enclosure Crossover points 4.5kHz	Center 2-way, 3 drivers, Wall mounts 12mm MDF TLIE enclosure Crossover points 3.5kHz	Surround 2-way, 4 drivers, Wall mounts 12mm MDF TLIE enclosure Crossover points 4.5kHz	Surround 2-way, 2 drivers, Wall mounts 12mm MDF TLIE enclosure Crossover points 4.5kHz
High-Frequency Driver	25mm (1") TPSTD & TTP Pure titanium tweeter dome, Copper-Clad Aluminum Wire voice coil with silver wiring , Φ70 magnet, TWG faceplate	25mm (1") TPSTD & TTP Pure titanium tweeter dome, Copper-Clad Aluminum Wire voice coil with silver wiring , Φ70 magnet, TWG faceplate	25mm (1") TPSTD & TTP Pure titanium tweeter dome, Copper-Clad Aluminum Wire voice coil with silver wiring , Φ70 magnet, TWG faceplate	25mm (1") TPSTD & TTP Pure titanium tweeter dome, Copper-Clad Aluminum Wire voice coil with silver wiring , Φ70 magnet, TWG faceplate	25mm (1") TPSTD Pure titanium tweeter dome, Copper-Clad Aluminum Wire voice coil with silver wiring , Φ70 magnet, TWG faceplate	25mm (1") TPSTD & TTP Pure titanium tweeter dome, Copper-Clad Aluminum Wire voice coil with silver wiring , Φ70 magnet, TWG faceplate	2 x 25mm (1") TPSTD Pure titanium tweeter dome, Copper-Clad Aluminum Wire voice coil with silver wiring , Φ70 magnet, TWG faceplate	25mm (1") TPSTD & TTP Pure titanium tweeter dome, Copper-Clad Aluminum Wire voice coil with silver wiring , Φ70 magnet, TWG faceplate
Midrange Driver and Mid-Bass Driver	133mm (5.25") TPACD Pure aluminum cone, bullet shape dust cap and chassis, flat wire copper voice coil, Φ80 magnet	2 x 165mm (6.5") TPACD Pure aluminum cone, dust cap and chassis, flat wire copper voice coil, Φ100 magnet	133mm (5.25") TPACD Pure aluminum cone, bullet shape dust cap and chassis, flat wire copper voice coil, Φ80 magnet	165mm (6.5") TPACD Pure aluminum cone, dust cap and chassis, flat wire copper voice coil, Double Φ110 and Φ100 magnet	4 x133mm (5.25") TPACD Pure aluminum cone, dust cap and chassis, flat wire copper voice coil, Φ80 magnet	2 x133mm (5.25") TPACD Pure aluminum cone, dust cap and chassis, flat wire copper voice coil, Φ80 magnet	2 x133mm (5.25") TPACD Pure aluminum cone, dust cap and chassis, flat wire copper voice coil, Φ80 magnet	133mm (5.25") TPACD Pure aluminum cone, dust cap and chassis, flat wire copper voice coil, Φ100 magnet
Bass Driver	2 x165mm(6.5") TPACD Pure aluminum cone, dust cap and chassis, flat wire copper voice coil, Φ100 magnet	-	165mm (6.5") TPACD Pure aluminum cone, dust cap and chassis, flat wire copper voice coil, Double Φ110 and Φ100 magnet	-	-	-	-	-
Recommended Amplifier Power	20-250W	20-230W	20-230W	20-150W	20-200W	20-130W	20-180W	20-130W
Frequency Response (+/- 3dB)	30Hz-40kHz	32Hz-40kHz	35Hz-40kHz	38Hz-40kHz	38Hz-40kHz	39Hz-40kHz	38Hz-40kHz	42Hz-40kHz
Impedance	6 ohm	6 ohm	6 ohm	6 ohm	6 ohm	6 ohm	6 ohm	6 ohm
Sensitivity	92dB	91dB	90dB	89dB	90dB	88dB	88dB	87dB
Dimensions (H x W x D) cm.	108,9 x 25 x 34 (H includes base, without spikes)	102,6 x 25 x 34 (H includes base, without spikes)	96,6 x 25 x 34 (H includes base, without spikes)	41 x 25 x 27.2	15.5 x 89 x 10	21 x 60 x 19	28 x 27.7 x 17.2	35 x 23 x 24.2
Weight (net)	40.2 kgs pair (including bases)	37.4 kgs pair (including bases)	36.4 kgs pair (including bases)	15.5 kgs pair	7.3 kgs pcs.	6.7 kgs pcs.	10 kgs pair	13.2 kgs pair

	SW-10
Design / Control / Inputs	Active subwoofer, 1-driver, bassreflex Auto ON/Standby, subwoofer level, variable cut-off frequency, variable 0-180 phase. Line level input, high level input. 25mm MDF TLIE enclosure
Bass Driver	255mm (10") Φ 140 magnet, paper cone, THAW
Frequency Response (+/- 3dB)	20Hz-200Hz
Amplifier Power	150W RMS / 500W Dynamic Peak, THCA
Dimensions (H x W x D) cm.	40 x 35 x 41 (excl. legs)
Weight (net)	22.8 kgs pcs.

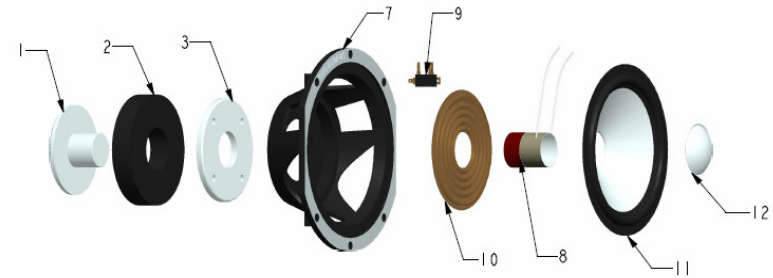
Description of Technology:

- **TLIE** – Taga Low Interference Enclosure: enclosures are made of high-quality, thick MDF boards with inside braces (floorstanding models) to increase stiffness and limit any unwanted resonances. The curved shapes lower vibrations, diffractions, turbulences and internal standing waves effect.
- **TPTTD** – Taga Pure Titanium Tweeter Dome: with oversized Φ 70 magnet, ferrofluid cooling and heavy duty CCAW and silver wiring voice coil, the tweeter can bear high power and its performance is very accurate, clear, smooth and detailed.
- **TWG** – Taga WaveGuide: specialized horn-like, tweeter's faceplate utilizing concave diffusers as well as dome metal grill assists with equal and flat dispersion of sound in and off the axis of the driver.
- **TTP** – Taga Top Plate: (selected models only) reduces standing waves effect and creates three-dimensional performance.
- **TPACD** – Taga Pure Aluminum Cone Driver: with aluminum dust caps and chassis, oversized magnet and heavy, pure copper flat wire voice coil, all of which allow for a high power handling as well as deep, precise and detailed bass performance (and detailed, rich and spacious midrange frequencies in midrange and mid-bass drivers).
- **THAW** - Taga High Amplitude Woofer: offers extended cone excursion, which results in increased speed and range. Bass is fast, strong, low and dynamic.
- **THCA** – Taga High Current Amplifier: offers huge amounts of raw power, and oversized, high-performance heatsink quickly dissipates generated heat, increasing efficiency and range of amplifier.

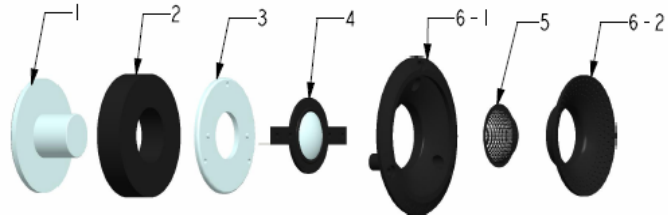
A. Platinum F midrange - 5.25inch



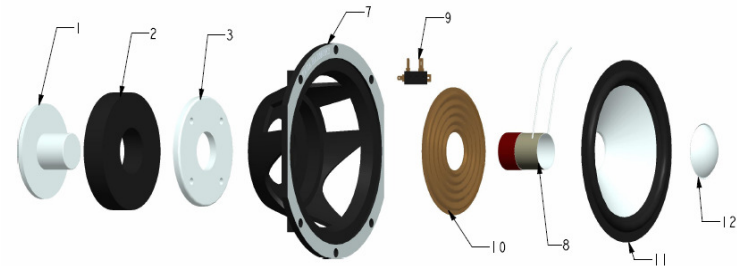
B. Platinum CS bass/midrange - 5.25inch



C. Platinum FCS tweeter - 1inch



D. Platinum F bass - 6.5inch



- 1. T-YOKE / Pole pie
- 2. Oversized ferrite magn
- 3. Top pla
- 4. TPTTD Pure-titanium dome and Copper-Clad Alumin Wire voice coil with silver wiring
- 5. Metal gri
- 6. TWG Front facepla
- 7. Aluminum injection-molded chassis with anti-oxidati surface process

- 8. Flat wire copper voice co
- 9. Termin
- 10. Spi
- 11. TPACD Pure aluminum cone and rubber surro
- 12. Pure aluminum dust
- 13. Silver plastic r
- 14. Pure aluminum bullet shape dust